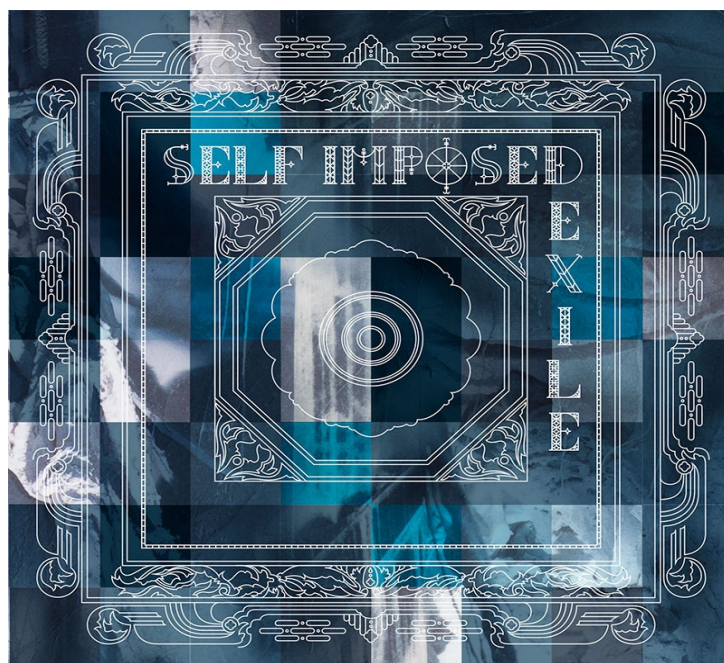


JAKUB ROJEK

Sounds From The Self-Exposed Exile

for clarinet and piano



# Sounds From The Self-Exposed Exile

for clarinet and piano

Can it Be Asked?

Repeat Gaze

Lilly Slip-up

Shade for Swarm

Inevitable/Thrill

## Instruction for performance

Notation of micro-tone pitch deviation in measures 78, 113, and 176:

↑↓

What is meant by this are not quarter-tones, but rather deviations of a not precisely determined size, which may reach a maximum of a quarter-tone.

Additional notes:

Tempo change in measures 38 and 40 happens on the second beat of the bar respectively.

# Sounds From The Self-Exposed Exile

## Can It Be Asked?

♩ = 84

Clarinet in Bb

♩ = 84

Piano

3

7

♩ = 212

♩ = 84

Cl.

♩ = 212

♩ = 84

Pno.

3

Cl.

♩ = 84

Pno.

3  $\text{♩} = 212$   $\text{♩} = 84$

7

Cl.

Pno.

9  $\text{♩} = 212$   $\text{♩} = 84$  *rall.*

Cl.

Pno.

Repeat Gaze

11  $\text{♩} = 105$

Cl.

Pno.

*simile*

13

Cl.

Pno.

15 *tr*

Cl.

Pno.

17

Cl.

Pno.

19 *tr* *tr* *tr* *tr*

Cl.

Pno.

21

Cl.

Pno.

23

Cl. *tr*

Pno. *pp* *8va* *mp sfz*

25

Cl. *mf*

Pno. *sfz*

27

Cl.

Pno.

29

Cl.

Pno.

31

Cl.

Pno.

33

Cl.

Pno.

35

Cl.

Pno.

37

Cl.

Pno.

$\text{♩} = 140$   $\text{♩} = 105$

*ff*



$\text{♩} = 140$

$\text{♩} = 105$

39

Cl.

Pno.

*ff*

41

Cl.

Pno.

43

Cl.

Pno.

45

Cl.

Pno.

### Lilly Slip-up

♩ = 120

47

Cl. *mp* ♩ = 120

Pno. *mp*

49

Cl.

Pno.

51

Cl. *subito p* *f*

Pno. *subito p* *f* *sfz*

53

Cl.

Pno.

55

Cl. *subito p*

Pno. *subito p*

57

Cl. *mf*

Pno. *mf*

59

Cl.

Pno.

61

Cl. *ethereal*

Pno. *ad lib.*

7

13

5

63 *a tempo*

Cl.

Pno.

Detailed description: This system covers measures 63 to 65. The Clarinet part (Cl.) is written in a single staff with a treble clef, playing a melodic line with eighth and sixteenth notes. The Piano part (Pno.) consists of two staves. The right hand plays a similar melodic line, while the left hand provides harmonic support with chords and sustained notes. The tempo is marked 'a tempo'.

66 *tr*

Cl.

Pno.

*ff*

*sfz*

*ff*

*sfz*

Detailed description: This system covers measures 66 and 67. The Clarinet part (Cl.) features a trill (tr) in measure 67. The Piano part (Pno.) has a forte (ff) dynamic in measure 67. The left hand has sforzando (sfz) markings in measures 66 and 67. The tempo remains 'a tempo'.

68

Cl.

Pno.

*p*

*p*

Detailed description: This system covers measures 68 and 69. The Clarinet part (Cl.) is marked piano (p). The Piano part (Pno.) is also marked piano (p). The tempo remains 'a tempo'.

70 *ethereal poco rall.*

Cl.

Pno.

*ad lib.*

*13*

*6*

*crisp*

*mp*

*8va*

Detailed description: This system covers measures 70 and 71. The Clarinet part (Cl.) is marked 'ethereal poco rall.' and 'crisp' in measure 71. The Piano part (Pno.) has 'ad lib.' markings and fingerings (13 and 6) in measure 70. The right hand is marked mezzo-piano (mp) and includes an 8va (octave) marking. The tempo changes to 'poco rall.'.

73

Cl.

Pno.

75

Cl.

Pno.

Shade for Swarm

76

Cl.

Pno.

78

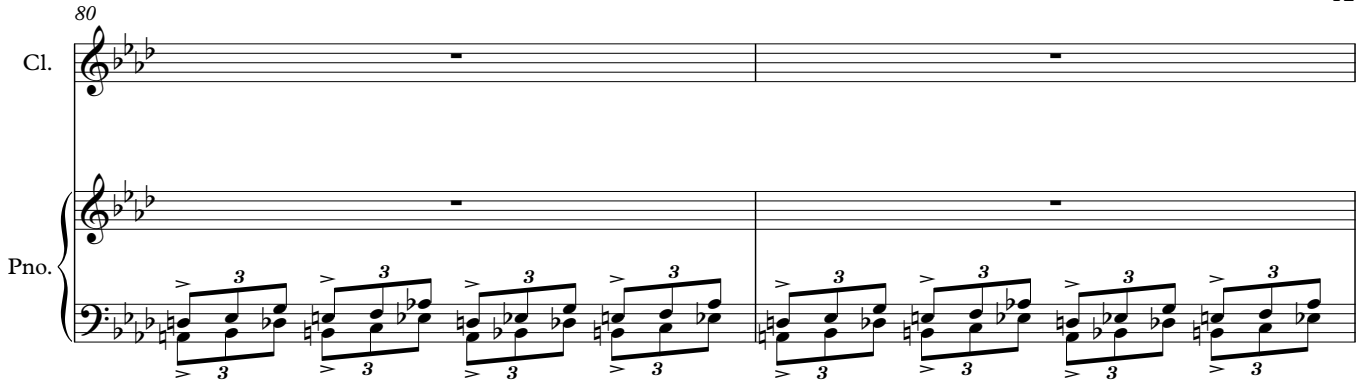
Cl.

Pno.

80

Cl.


Pno.



82

Cl.

Pno.



84

Cl.

Pno.



86

Cl.

Pno.



88

Cl.

Pno.

90

Cl.

Pno.

92

Cl.

Pno.

94

Cl.

Pno.

96 *tr*

Cl.

Pno.

98

Cl.

Pno.

100 *tr*

Cl.

Pno.

$\text{♩} = 112$

102

Cl.

Pno.

$\text{♩} = 112$  *martelato*



15

104

Cl.

Pno.

106

Cl.

Pno.

*simile*

108

Cl.

Pno.

110

Cl.

Pno.

112

Cl.

Pno.

114

Cl.

Pno.

116

Cl.

Pno.

118

Cl.

Pno.

17 *tr*  
120  
Cl.

Pno.

122 *tr*  
Cl.

Pno.

124  
Cl.

Pno.

126  
Cl.

Pno.

128

Cl. *3* *3* *3* *3* *3* *gliss.* *3*

Pno. *6* *6* *6* *6* *6* *6* *6* *6*

130

Cl. *3* *3* *3* *3* *3* *3*

Pno. *6* *6* *6* *6* *6* *6* *6* *6*

132

Cl. *3* *3* *3* *gliss.* *tr* *tr* *tr* *tr* *tr* *tr* *tr* *3* *3*

Pno. *6* *6* *6* *6* *6* *6* *6* *6*

134

Cl. *3* *3* *3* *3*

Pno. *6* *6* *6* *6* *6* *6* *6* *6*

136

Cl.

Pno.

138

Cl.

Pno.

140

Cl.

Pno.

*f* *ff* *rit.* *f* *ff*

$\text{♩} = 178$

143

Cl.

Pno.

146 *ad lib.* ♩ = 108 *poco rall.* 20

Cl.

Pno.

149 *semplice dolce* *pp* 3 5 *rit.*

Cl.

Pno.

152 *p semplice dolce* 3 5 3 5 3 5

Cl.

Pno.

♩ = 168 155 *f* 3 16 12 8

Cl.

Pno.

21

158 *ad lib.* ♩ = 88

Cl. *pp* 3 3 3

Pno. *pp* 3 3 3 5

161 *soto voce*

Cl. *pp* *soto voce*

Pno. *pp* *soto voce* 4

164

Cl. 5 9 7 7 7

Pno. 5 4

♩ = 110

166

Cl. ♩ = 110

Pno. 6 6 6 6 6 6 6 6

168

Cl.

Pno.

6 6 6 6 6 6 6 6

170

Cl.

Pno.

3 3 3 3 tr

6 6 6 6 6 6 6 6

172

Cl.

Pno.

3 3 3 3 tr

6 6 6 6 6 6 6 6

174

Cl.

Pno.

3 3 3 3

6 6 6 6 6 6 6 6



176

Cl.

Pno.

178

Cl.

Pno.

180

Cl.

Pno.

182

Cl.

Pno.

184

Cl. *tr*

Pno.

186 *tr*

Cl.

Pno.

188

Cl.

Pno.

190

Cl.

Pno.

192

Cl.

Pno.

194

Cl.

Pno.

196

Cl.

*gliss.*

Pno.

198

Cl.

Pno.

200

Cl.

Pno.

202

Cl.

Pno.

204

Cl.

Pno.

*f*

*ff*

*tr*

*VI*

$\text{♩} = 168$

207

Cl.

Pno.

27

210 *ad lib.*  $\text{♩} = 108$

Cl. *mf* **poco rall.** *tr*

Pno. **poco rall.**  $\text{♩} = 108$

Inevitable/Thrill

$\text{♩} = 62$

213

Cl. *semplice dolce* *mp*

Pno. *mp*

216

Cl.

Pno.

219

Cl. **rall.** *a tempo* *tr*

Pno. **rall.** *a tempo*

222 *alien* *rit.* *a tempo*

Cl. *ad lib.*

Pno. *ad lib.*

♩ = 130

225

Cl.

Pno.

♩ = 130

228

Cl.

Pno.

♩ = 130

231

Cl.

Pno.

♩ = 130

234 *rall.*

Cl. *mf* 3 3 3 3

Pno. *tenuto* *rall.* *mf* 3 3 3 3

237 *sfz* 3 3 3

Pno. *cresc.* 3 3 3 3 3 3 3 3 3 3

239 *sfz* *sfz*

242 *fff* *fff*